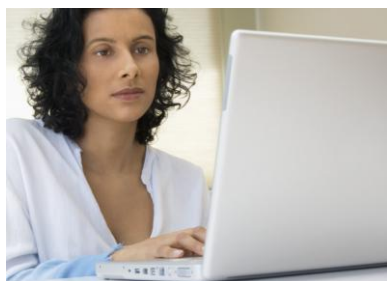




# The Trusted Edge Solution for Symantec Enterprise Vault

Policy-Driven Control of Unstructured Content

www.trustededge.com



## Highlights

Trusted Edge uniquely complements Enterprise Vault with features that:

- Classify email and documents at the point of creation
- Support comprehensive email and document capture policies
- Store documents and email automatically based on business policies
- Provide centralized policy management throughout the organization
- Provide a seamless operation for online and offline users
- Deliver a cost-correct ROI with a proactive, best practices approach to eDiscovery

Organizations must efficiently manage email and documents for retention, eDiscovery, knowledge, and cost. However, many users currently create, modify, share, and store documents and email on their desktops and laptops without regard for corporate retention policies. The Trusted Edge® Solution for Symantec Enterprise Vault™ solves this problem by providing a user-driven classification model leveraging minimal end-user interaction and extending email and document classification, capture, and preservation capabilities of Symantec Enterprise Vault to all workstations.

The unique Trusted Edge approach to data classification provides a controlled collection methodology for storing unstructured data (email, documents, and files) in Symantec Enterprise Vault. Following a Trusted Edge deployment, businesses can apply corporate policies to desktop information and subsequently manage all email and documents based on internal and external rules. The bottom line is enhanced retention compliance, reduced litigation risk, and lower enterprise storage costs – the result of classifying and routing files to their appropriate storage tier.

## Intelligent Classification and Archiving

Trusted Edge solves a key problem facing businesses today – how to successfully implement a “best practices” digital records management policy across the entire corporate network, including the desktop, where 80% of documents are created. Unlike traditional stand-alone ECM solutions, Trusted Edge enforces the mandatory classification of desktop-generated content from Microsoft® Office, Microsoft Outlook, Microsoft Outlook Web Access (OWA), and other common file applications and automatically routes documents and email to the Enterprise Vault repository. Furthermore, Trusted Edge can route multiple file copies or placeholders to Enterprise Vault or other repositories in a federated storage architecture to create a highly flexible archive.

The Trusted Edge Solution for Symantec Enterprise Vault provides customers:

- Single-step, intelligent classification for e-mails and files
- Consistent and automatic enforcement of corporate and regulatory policies
- Prevention of archiving junk e-mail or irrelevant documents
- Optimized search and discovery by leveraging classification tags in Compliance Accelerator™ and Discovery Accelerator™
- Branding documents and email with a unique Trusted Edge asset ID for authentication

## Server Features

- Centralized policy management
- Comprehensive metadata database
- Reporting, analysis, and metadata forensics
- Heterogeneous infrastructure support
- Centralized deployment of software installation through the Microsoft® System Management Server

## Desktop Client Features

- Comprehensive application-independent document and email capture
- Interactive and automated classification
- Intelligent filing in a federated storage architecture

FileTek

### Corporate Headquarters:

FileTek, Inc.

9400 Key West Avenue  
Rockville, MD 20850  
Phone: 301.251.0600  
info@filetek.com  
www.filetek.com

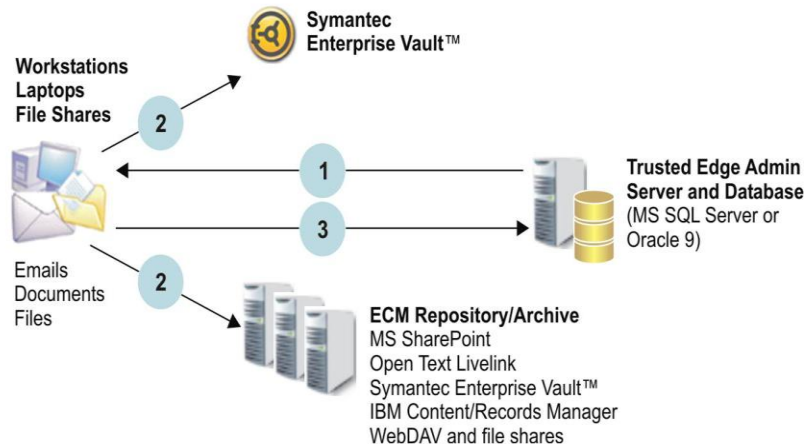
### International Headquarters:

FileTek Ltd

1 Northumberland Ave.  
London WC2N 5BW  
Phone: +44 (0) 207.872.5583  
intsales@filetek.com

## Trusted Edge Architecture

The following figure illustrates the Trusted Edge architecture and operations flow.



- 1) Administrators create policies on the Trusted Edge Administration Server and publish them to end-user workstations.
- 2) At asset creation, Trusted Edge enforces classification policies, brands assets with a unique identifier, and routes them to the proper retention category or archive in Symantec Enterprise Vault. Trusted Edge can also retain a convenience copy or a desktop shortcut for assets on a user workstation. In addition, the software can archive an asset shortcut to one repository and have that shortcut point to an asset in Symantec Enterprise Vault (for example, a shortcut in SharePoint can link to an asset in Enterprise Vault).
- 3) The Trusted Edge Administration Server stores unique asset identifiers and asset metadata to provide a complete audit trail.

## Trusted Edge Benefits

Trusted Edge provides the following benefits to departments across the enterprise:

- *Compliance/litigation support* – Reduces risk and eDiscovery costs by adding business context to information
- *Enterprise content management* – Increases productivity through comprehensive information capture and structured data organization
- *Intelligent archiving* – Reduces archive size and management costs by retaining information aligned with business objectives
- *Intelligent storage management* – Reduces storage costs by intelligently filing documents and email into appropriate storage tiers based on policy and business needs

## For More Information

For more information about how the Trusted Edge Solution for Symantec Enterprise Vault can benefit your organization, contact a Trusted Edge sales representative, e-mail [info@filetek.com](mailto:info@filetek.com), or visit [www.trustededge.com](http://www.trustededge.com).

©2009 FileTek, Inc. All rights reserved. FileTek and Trusted Edge are U.S. registered trademarks of FileTek, Inc. Microsoft is a registered trademark of Microsoft in the United States and other countries. Open Text and Livelink are names and/or marks of Open Text Corporation in Canada, the United States, and other countries. Symantec and Enterprise Vault are registered trademarks of Symantec Corporation in the United States and other countries. IBM is a U.S. registered trademark of IBM Corporation. Other trademarks included herein are the property of their respective owners.

TRUSTED EDGE