

# StorHouse/Control Center

StorHouse Availability, Scalability, and Power Made Crystal Clear

## Features

- Comprehensive, easy-to-use GUI interface that makes it easier to perform system and database administration tasks
- Complete configuration, operation, and management flexibility
- Support for full-service “plug-in” software modules
- Versatile Report Generator for viewing and graphing StorHouse data
- Real-time Activity Monitor for auditing system performance
- Raw Data Viewer for examining data behind suspect reports
- User Log Browser for viewing and analyzing different user log records
- Interactive consoles for submitting ad hoc SQL statements and StorHouse Command Language commands
- Access to StorHouse user documentation in Adobe Acrobat PDF format from the StorHouse/Control Center selection bar
- Comprehensive online help for all StorHouse/Control Center modules

StorHouse/Control Center is FileTek’s Windows®-based management tool for StorHouse system and database administration. Its intuitive graphical user interface (GUI) simplifies managing StorHouse® servers and databases by eliminating the learning curve and syntax errors typically associated with issuing command line instructions.

As Figure 1 illustrates, the software provides a clear, visual representation of the relationships between StorHouse resources, including storage devices, volume sets, file sets, accounts, files, and database objects.

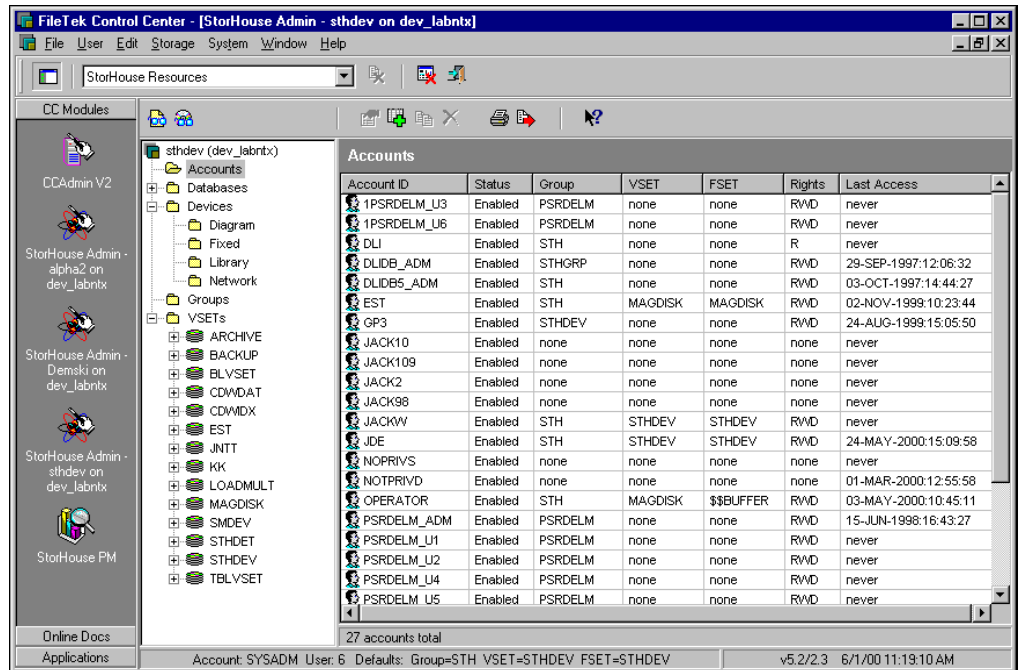


Figure 1: Listing StorHouse Resources in StorHouse/Control Center

## Architecture

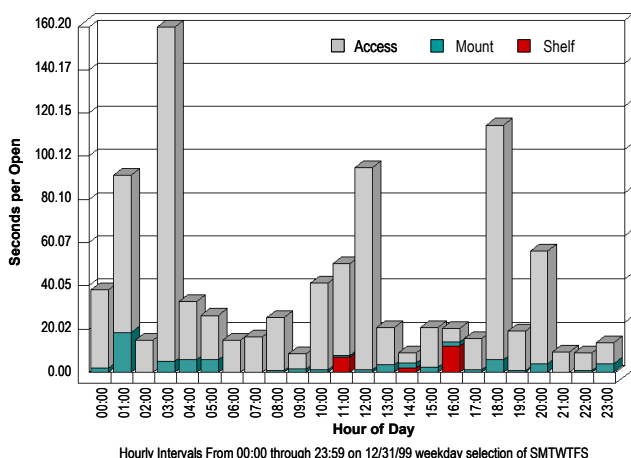
StorHouse/Control Center has a three-tier, client-server architecture that supports flexible configurations to satisfy individual site requirements. It also provides fault tolerance through redundant servers and communications paths. The architecture consists of one or more StorHouse/Control Center servers communicating with StorHouse/Control Center modules over a TCP/IP network. StorHouse/Control Center servers and modules run on Windows NT, Windows 2000, or XP Pro platforms.

## “Plug-in” Modules

StorHouse/Admin, StorHouse/Performance Monitor, and CC/Admin are StorHouse/Control Center “plug-in” modules that perform various administration functions. These modules open and execute within the StorHouse/Control Center framework, a graphical environment that provides common services to all modules. You can install one or more modules on any client computer, and even represent and launch non-FileTek applications (for example, word processing programs) from the StorHouse/Control Center selection bar.

The StorHouse/Control Center “plug-in” modules are described below. All modules include comprehensive online help systems.

**StorHouse/Admin** – StorHouse/Admin provides the administration and operational tools to manage multiple StorHouse systems concurrently through a Windows GUI from one or more network-connected PCs. Using visual elements such as pull-down menus, option lists, point-and-click controls, and intelligent prompting, StorHouse/Admin simplifies the tasks of storage management, database management, system operation, and security administration. StorHouse/Admin works within the StorHouse/Control Center framework and within existing StorHouse security mechanisms to provide secure data access based on StorHouse privileges.



StorHouse/Admin monitors functions such as StorHouse server CPU usage, mounted volumes, device status, and request activity in real-time. As a result, StorHouse administrators can obtain an immediate picture of StorHouse system status and identify the need for additional system resources or performance improvements.

StorHouse/Admin also provides front-end tools for managing databases, tables, tablespaces, indexes, and access privileges. StorHouse/Admin shields users from SQL syntax issues by interactively constructing SQL commands associated with various administration tasks. StorHouse/Admin also provides an interactive SQL console for database administrators or system administrators who want to compose their own ad hoc SQL queries.

**StorHouse/Performance Monitor** – StorHouse/Performance Monitor is a powerful tool for understanding, monitoring, and analyzing StorHouse performance. System administrators can view current and historical activity and graphically depict performance measures in easy-to-read reports. The software supports 24 basic report types and three different report formats. Reported performance measures include mounts, data transfers, file opens, shelf requests, volume set accesses, hardware errors, and system availability.

**CCAdmin** – CCAdmin provides graphical tools for monitoring and managing StorHouse/Control Center servers. The software remotely administers these servers, which are designed for "lights out" operation. StorHouse/Control Center server configuration activities include identifying the StorHouse systems connected to the StorHouse/Control Center server and defining fail-over criteria and alternate systems in fault-tolerant installations. In addition, CCAdmin reports statistics useful to server management.

## For More Information

For more information about StorHouse/Control Center and how it simplifies StorHouse system and database administration, contact a FileTek sales representative. You can also e-mail your questions to [info@filetek.com](mailto:info@filetek.com).



### Corporate Headquarters:

**FileTek, Inc.**  
 9400 Key West Avenue  
 Rockville, MD 20850  
 Phone: 301.251.0600  
[info@filetek.com](mailto:info@filetek.com)  
[www.filetek.com](http://www.filetek.com)

### International Headquarters:

**FileTek UK Limited**  
 1 Northumberland Ave.  
 London WC2N 5BW  
 Phone: +44 (0) 207.872.5583  
[intsales@filetek.com](mailto:intsales@filetek.com)  
[www.filetek.com](http://www.filetek.com)